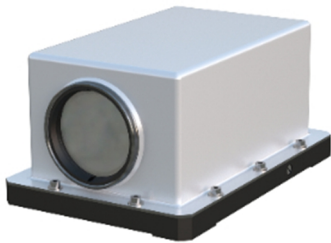


## HIGH PERFORMANCE OPTRONICS & OPTO-MECHANICS



### SCROME DCAM Day camera

#### OVERVIEW

The SCROME DCAM is a high performance day camera built for harsh environment with SCROME's renowned uncompromising ruggedness and quality.

#### APPLICATIONS

Observation and fire control for land, naval and air applications.

The accuracy of SCROME design and manufacturing allows the DCAM to be used also for multi-sensors system harmonization.

#### FEATURES AND BENEFITS

- **Performance**  
Accurate design ensuring a perfect alignment between mechanical interface and video sensor
- **Environment**  
Designed and qualified for harsh environments: salt fog, sand and dust, random vibrations, lateral accelerations, high and low temperature, humidity, chocks, etc....

Temperature:

- Operating: – 10°C to + 50°C
- Storage: – 20°C to + 60°C

#### TECHNICAL CHARACTERISTICS

- **Sensor:** CMOS, 2.1 megapixels
- **Spectral range:** visible and low light level sensibility
- **Video outputs:** Full-HD 1080p / 60fps (HD-SDI) and SD (PAL)
- **Connectors:** D38999 type
- **Horizontal FOV:** 2.3° - 63.7°
- **Continuous optical zoom:** x30
- **Numerical zoom:** x12
- **Control interface:** serial link with VISCA protocol

#### ACCESSORIES

The DCAM is supplied with its foam padded transport case.

The following accessories are available:

- Instruction manual
- Connection cord including video, power supply and control interface
- Cleaning kit